



FIRST[®]
EDITIONS
SHRUBS & TREES

LANDSCAPE GUIDE

WARM CLIMATES (ZONES 6-9)

CINNAMON GIRL[®]
DISTYLUM



ECLIPSE®
BIGLEAF HYDRANGEA

WELCOME TO THE MOST FUN YOU'VE EVER HAD WITH SHRUBS AND TREES!

Let's face it. You've got a lot of options when it comes to plant selection for the landscape. And you've got time-tested favorites that have earned their place on your short list. So, we realize it can take a lot to try something different.

As you browse this brochure, you'll learn more about the intentionally selected varieties in the First Editions® Shrubs & Trees collection that are rewriting the book on how to talk about this foundational category.

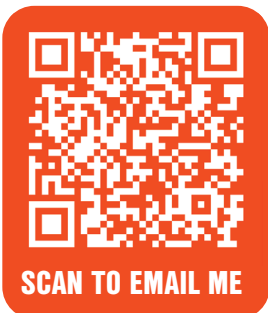
Introduced for better flowering, greater disease resistance, mass planting appeal, native species benefits, low maintenance, and more, First Editions® provides you with plants you can trust. Plants that will perform year after year. Plants with purpose.

We invite you to take some time with this brochure, not just to look at our Rock Star plants, but also to learn the work that goes into each introduction, how they've been tested, landscape inspiration, and plants that provide solutions. Enjoy, and we look forward to working with you!

Layci Gragnani

Brand & Business Development Manager

layci.gragnani@baileynurseries.com



THE FIRST EDITIONS® VIEWPOINT

First Editions® works to make shrubs and trees accessible to the trade and home gardeners. Easy solutions for tough problems. Sometimes that means providing a beautiful plant for a wet spot in the landscape. Sometimes that means a water-wise, adaptable plant as climate change affects our palette for the future. And sometimes it just means narrowing plant options to what works best in your region. We want to make finding the best plant for your site easy to find, easy to understand, and easy to use.

COLLECTIONS APPROACH

To make that ease-of-use philosophy come to life, First Editions® is broken down into collections. So, if you're looking for plants for a specific region in North America, we've got you covered. If you're looking for plants for pollinators, we've broken that down for you. Have a client that wants a privacy hedge? There's a list for that! Keep flipping through these pages to find many of these tools, and head to the Resources tab on BaileyNurseries.com for even more solutions to make using First Editions® easy as can be.



LITTLE HOTTIE®
PANICLE HYDRANGEA

THE BEST PLANTS

Removing the big challenges of shrubs and trees in the landscape starts with having the best plants on the market. We are incredibly proud of the First Editions® collection and stand behind their performance from propagation to the landscape. And we can do that because they go through such rigorous testing and trialing before introduction. If a plant is bred in-house at Bailey Innovations™, it can take seven to ten years from sowing seed to retail introduction.

Because we really want to ensure it performs as promised. Between Bailey Innovations™ breeding efforts and worldwide breeder partnerships, we are always looking for an improvement on an existing species, bringing a new species to the marketplace like we did with *Distylium*, and looking at the future needs of our landscapes as it relates to climate change. We are methodical when introducing new varieties, only bringing something to market if it truly can stand on its own and be better than what already exists. We won't flood the system with plants simply for the sake of being new.



David Roberts
Director of Plant Breeding at Bailey Innovations™

FINDING FIRST EDITIONS®



SCAN TO LEARN MORE

These great shrubs, trees, and more are sold worldwide through a vast network of licensed growers. Including brand owner Bailey Nurseries, there are more than 75 partners around the world that can propagate and distribute First Editions®. This allows easy access to these fantastic genetics, no matter where you grow and sell plants. To find the right grower for you, scan the QR code or visit the First Editions® tab on BaileyNurseries.com.

★ ★ ★ ROCK STARS ★ ★ ★

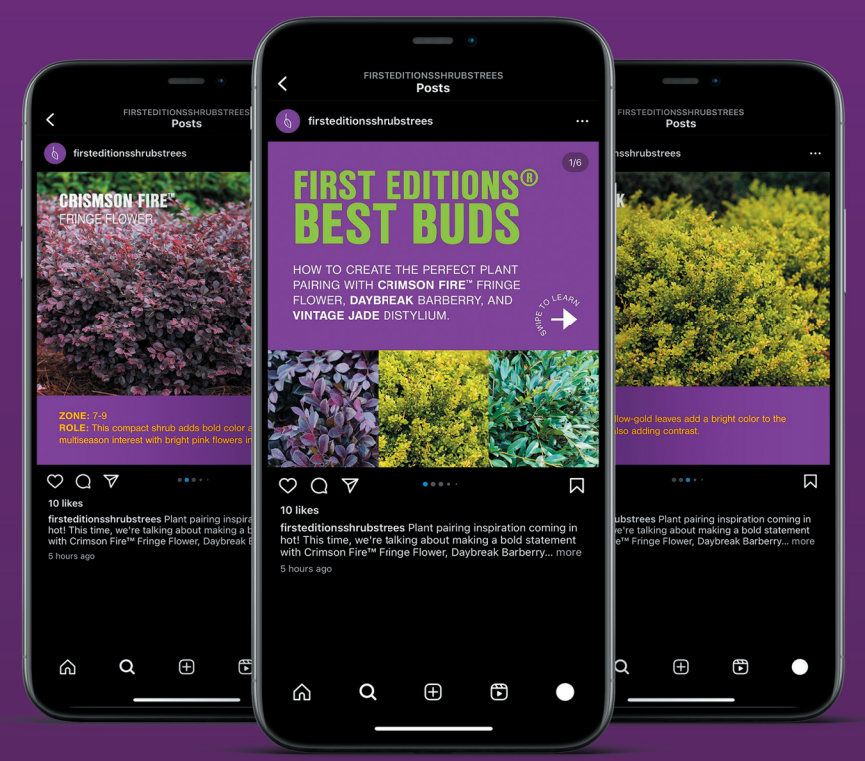
While we are confident in every plant in First Editions®, we have some top selections that have gone above and beyond, demonstrating their reliability in production, at retail, and in the landscape. With more than 100 shrubs and trees to choose from, it can be difficult to make a selection on what to grow and sell. That's why we put together our handy list of Rock Stars to help make the decision for you.

Don't know where to begin? We've got you covered. These Rock Stars have earned their title through ultimate multi-region performance, versatility, outstanding visual interest — and will undoubtedly enhance any outdoor environment with strength, texture, and color. Flip to the next few pages for even more on some of our top Rock Stars in the landscape!



BEST BUDS

Having individual Rock Stars is important, but knowing how to use them in the landscape with other plants is also a big deal. Our best-performing consumer advertising campaign is consistently what we call Best Buds. This is an easy how-to guide for pairing First Editions® plants with other perennials, shrubs, and trees. We've shared some Best Buds ideas in this guide, but even more illustrations, lists, and ideas are available at BaileyNurseries.com.



Find your Best Bud and follow along
@FirstEditionsShrubsTrees



BEST BUDS

ROCK STAR FEATURE PRODUCTS



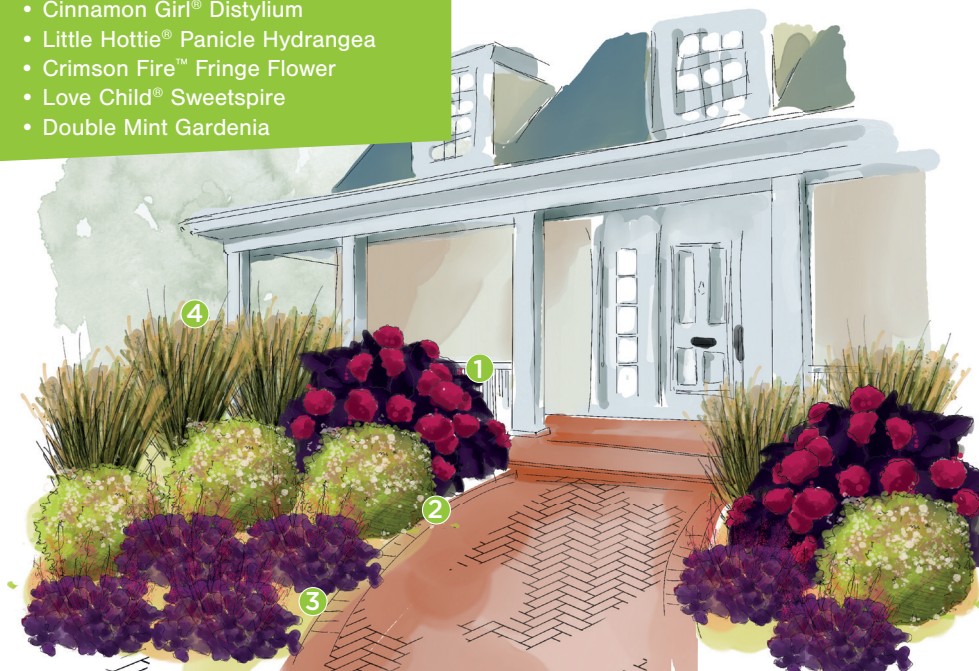
ECLIPSE® BIGLEAF HYDRANGEA

Eclipse® is a groundbreaking hydrangea that features deep purple foliage that remains dark all summer long. And that's not all! The striking foliage contrasts beautifully with the cranberry colored blooms. At 3-5', Eclipse® is right at home in any landscape or outdoor space, and the colors are perfect for pairing with anything in the garden.

Height: 3-5'		Width: 3-5'		Zone: 5-9
Shape: Mounded		Exposure: Morning Sun,	Afternoon Shade	

ECLIPSE® BEST BUDS:

- Cinnamon Girl® Distylium
- Little Hottie® Panicle Hydrangea
- Crimson Fire™ Fringe Flower
- Love Child® Sweetspire
- Double Mint Gardenia



The features of Eclipse® (1) can be showcased in a entry walkway, along with Vanilla Brandy™ Abelia (2), Northern Exposure™ Black Coral Bells (3), and Karl Foerster Feather Reed Grass (4).

BECAUSE IT'S LOW MAINTENANCE, ECLIPSE® IS SUITABLE FOR RESIDENTIAL AND COMMERCIAL LANDSCAPES. IN ADDITION, THE COLORS OF ECLIPSE® LOOK STUNNING IN DECO POTS, EITHER BY THEMSELVES OR MIXED WITH SEASONAL PLANTS.



Alternate Eclipse® (1) with Vanilla Brandy™ Abelia (2) to create a focal point with the dark leaves and stunning blooms of Eclipse® accented against the light variegation of Vanilla Brandy™. Tall Guy® Arborvitae (3) provides a great vertical evergreen backdrop.

BEST BUDS | ROCK STAR FEATURE PRODUCTS



LITTLE HOTTIE® PANICLE HYDRANGEA

This compact hydrangea makes a big statement in the landscape, with massive white blooms that cover the plant from top to bottom. Little Hottie® was bred for the heat and can be used in almost any landscape. It remains 3-5' tall and wide, making it the perfect companion for annuals, perennials and other shrubs. This hydrangea can be grown as a specimen or planted in groups to maximize the bloom power. Little Hottie® has a natural branching habit that minimizes the need for pruning, while creating a full plant.

Height: 3-5'	Width: 3-5'	Zone: 3-8
Shape: Rounded	Exposure: Full Sun to Part Shade	

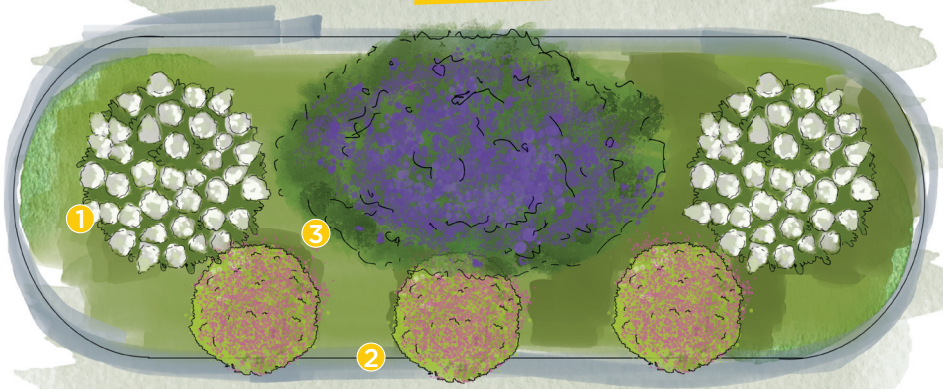


In residential sites, Little Hottie® (1) shines in foundation beds and borders. Plant it with dark-leaf shrubs like Sunset Magic™ Crapemyrtle (2) to highlight the vibrant white blooms. In a cottage garden, Little Hottie® is the right size for mixing with other plants like Easy Elegance® Kashmir Rose (3), Pop Star® Reblooming Hydrangea (4), or Rozanne Geranium.



LITTLE HOTTIE® BEST BUDS:

- Purple Magic Crapemyrtle
- Vintage Jade Distylium
- Flip Side® Chastetree
- Chubby Hubby™ Japanese Holly
- Opening Day™ Viburnum



Little Hottie® (1) has many landscape applications, including commercial properties. Its compact stature and heat tolerance is excellent for use along sidewalks and parking lots. Little Hottie® is an excellent companion plant for Superstar™ Spirea (2) and Flip Side® Chastetree (3), which also do well in this commercial setting.

BEST BUDS | ROCK STAR FEATURE PRODUCTS



CRIMSON FIRE™ FRINGE FLOWER

Crimson Fire™ is a truly compact red-leaf fringe flower with beautiful evergreen foliage. This well-behaved selection has controlled growth that reduces the need for pruning, keeping it low-maintenance. In spring, the bright pink flowers look stunning alongside the rich dark foliage.

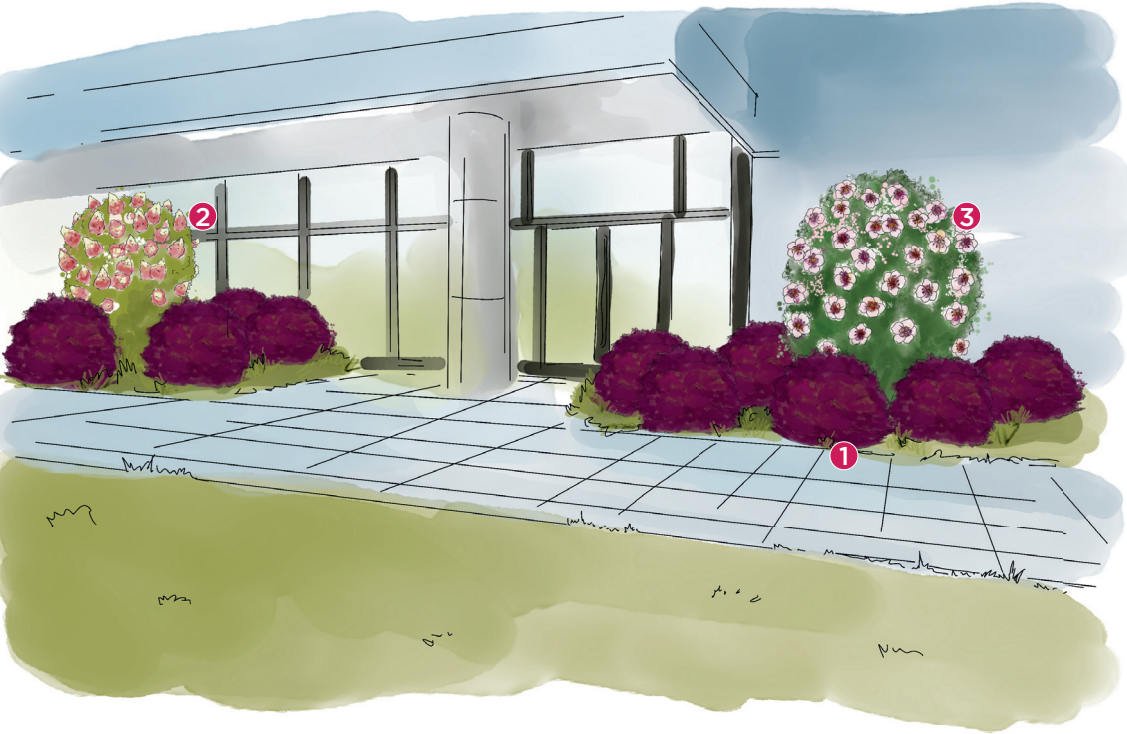
Height: 4'		Width: 4-5'		Zone: 7-9
Shape: Mounded		Exposure: Full Sun to Part Shade		



In residential landscapes, use Crimson Fire™ (1) to provide structure near outdoor living spaces, walkways, and foundation beds. It makes a beautiful backdrop for annual beds and can be mixed with small-to-midsized shrubs like Little Hottie® Panicle Hydrangea (2), Vanilla Brandy™ Abelia (3), or fragrant Sweet Tea™ Gardenia (4).

CRIMSON FIRE™ FRINGE FLOWER BEST BUDS:

- Tianshan® Seven-Son Flower
- Jetstream™ Hydrangea
- Ruffled Red Magic™ Crapemyrtle
- Galactic Pink® Chastetree
- Centennial Blush Star Magnolia



The compact size of Crimson Fire™ (1) gives it fantastic versatility. In commercial landscapes, it can be mass planted in parking lots, along sidewalks, and used as a backdrop for seasonal beds. For more interest, add height to the planting with Berry White® Hydrangea (2) , Bali™ Hibiscus (3), or Lunar Magic® Crapemyrtle. Crimson Fire™ is an evergreen shrub, providing year-round interest.

PROBLEM SOLVERS

Adding shrubs to your landscape is an excellent way to provide structure, frame buildings, anchor designs, and create year-round interest. Check this handy chart when designing to take advantage of all these Rock Stars have to offer.

First Editions® Rock Stars	Size		Sun Needs	Zone	
	H	W			
Cinnamon Girl® Distylium	2-3'	3-4'		7-9	
Vintage Jade Distylium	3-4'	4-5'		7-9	
Bali™ Hibiscus	5-8'	4-7'		5-8	
Eclipse® Bigleaf Hydrangea	3-5'	3-5'		5-9	
Berry White® Panicle Hydrangea	6-7'	4-5'		3-8	
Little Hottie® Panicle Hydrangea	3-5'	3-5'		3-8	
White Diamonds® Panicle Hydrangea	4-6'	5'		3-8	
Cobalt-n-Gold™ Hypericum	2-3'	4-5'		4-7	
Straight & Narrow® Japanese Holly	6-8'	2-3'		6-8	
BananAppeal® Small Anise Tree	3-4'	3-4'		7-9	
Lunar Magic® Crapemyrtle	7-9'	5-7'		7-9	
Purple Magic Crapemyrtle	7-10'	7-10'		7-9	
Crimson Fire™ Fringe Flower	4'	4-5'		7-9	
Centennial Blush Star Magnolia	12-18'	10-15'		4-9	
Flip Side® Chastetree	6-8'	8-10'		7-9	

LOOKING FOR THE FULL LIST?
SCAN THE QR CODE!



	Drought Tolerant	Wet Soils	Salt Tolerant	Deer Resistant*	Good for Containers	North American Native Species	Attracts Pollinators	Mass Planting	Screening & Hedges	Added Interest
	●	●		●				●		
	●	●		●				●		
			●	●			●		●	
			●		●			●		
	●								●	Striking fall bloom color
	●				●			●		
	●						●		●	
	●		●	●	●	●	●	●		
			●						●	
				●	●	●		●		Fragrant blooms
	●			●			●		●	
	●			●			●		●	Beautiful fall color
	●			●				●		Beautiful fall color
				●			●		●	Fragrant blooms
	●		●	●			●			Fragrant blooms

*Deer resistance can be regional and circumstantial. These designations are based on the Rutgers New Jersey Agricultural Experiment Station research, as available.

SEASONAL COLOR

In addition to tactical solutions, the aesthetic is also important. Review this color chart for how the plants will appear in the landscape so that you can pair accordingly for seasonal interest.

	SPRING	
Cinnamon Girl® Distylium	Plum-Purple New Growth	
Vintage Jade Distylium	Dark Green Evergreen Foliage	
Bali™ Hibiscus	Green Foliage	
Eclipse® Bigleaf Hydrangea	Dark Purple Foliage	
Berry White® Panicle Hydrangea	Green Foliage	
Little Hottie® Panicle Hydrangea	Green Foliage	
White Diamonds® Panicle Hydrangea	Green Foliage	
Cobalt-n-Gold™ Hypericum	Blue/Silver/Green Foliage	
Straight & Narrow® Japanese Holly	Dark Green Foliage	
BananAppeal® Small Anise Tree	Golden-Yellow Foliage	
Lunar Magic® Crapemyrtle	Purple-Black Foliage	
Purple Magic Crapemyrtle	Green Foliage	
Crimson Fire™ Fringe Flower	Red Foliage with Pink Blooms	
Centennial Blush Star Magnolia	Pink Buds Open to Almost Pure White Blooms	
Flip Side® Chastetree	Olive-Green Foliage	

LOOKING FOR THE FULL LIST?
SCAN THE QR CODE!



	SUMMER	FALL	WINTER
	Dark Green Evergreen Foliage		
	Dark Green Evergreen Foliage		
	White Blooms with Purple-Red Center		
	Dark Purple Foliage with Cranberry Blooms		
	White Blooms	White Blooms Fade to Dark Pink	
	White Blooms	White Blooms Fade to Light Pink	
	White Blooms	White Blooms Fade to Parchment and Pink	
	Yellow Blooms	Shades of Yellow, Orange, and Red Foliage	Exfoliating Bark
	Dark Green Foliage		
	Golden-Yellow Foliage		
	White Blooms with Purple-Red Center	Purple-Black Foliage	
	Dark Purple Blooms	Green Foliage	
	Red Evergreen Foliage		
	Green Foliage	Yellow-Bronze Foliage	
	Deep Purple Blooms		

BANANAPPEAL®

SMALL ANISE TREE

Illicium parviflorum 'PIIP-I' PP28,887

WHY IT ROCKS:

- Stunning golden-yellow foliage brightens up shady gardens
- A compact plant for shade in residential or commercial properties
- An improved native variety with disease resistant foliage

HOW TO USE IT:

- A bright specimen in the landscape or decorative pots
- Group plantings on its own or mixed with other shrubs

BEST BUDS:

- Jetstream™ Oakleaf Hydrangea
- Eclipse® Bigleaf Hydrangea
- Love Child® Sweetspire

HEIGHT	WIDTH	SHAPE
3-4'	3-4'	Upright, Round
ZONE	EXPOSURE	
7-9	Part Sun to Full Shade	



FLIP SIDE®

CHASTETREE

Vitex x 'Bailtexone' PP30,283

WHY IT ROCKS:

- A strong rebloomer and pollinator magnet
- Remains compact for smaller landscapes
- Unique greyish leaves that are dusky purple on the lower surface
- Outstanding cold hardiness to Zone 7

HOW TO USE IT:

- Plant where the purple bottom of the leaf can be visible while flickering in the wind
- Specimen planting with smaller shrubs

BEST BUDS:

- Midnight Magic™ Crapemyrtle
- Vintage Jade Distylium
- Sweet Tea™ Gardenia



HEIGHT	WIDTH	SHAPE
6-8'	8-10'	Upright, Arching
ZONE	EXPOSURE	
7-9	Full Sun	

PURPLE MAGIC

CRAPEMYRTLE

Lagerstroemia 'Purple Magic' PP23,906

WHY IT ROCKS:

- A blooming and reblooming machine with dark purple flowers from top to bottom
- Disease resistant foliage remains clean all season
- Retains a dense, round habit in the landscape

HOW TO USE IT:

- Commercial properties along parking lots and in road medians
- Underplant with smaller shrubs or use as a specimen

BEST BUDS:

- Coppertone™ Distylium
- Little Hottie® Panicle Hydrangea
- Cool Glow® Pomegranate Nandina



HEIGHT	WIDTH	SHAPE
7-8'	7-8'	Rounded
ZONE	EXPOSURE	
7-9	Full Sun	

CINNAMON GIRL[®]

DISTYLIUM

Distylium 'PIIDIST-V' PP27,631

WHY IT ROCKS:

- Compact and durable evergreen shrub with excellent disease resistance
- Improved cold hardiness
- Perfect alternative for plants that are prone to disease, such as boxwood and cherry laurel

HOW TO USE IT:

- Plant in groups along a foundation, walkway, or on a slope for erosion control
- Entrance or patio beds for commercial properties

BEST BUDS:

- Funky Fuchsia™ Butterfly Bush
- Sunset Magic™ Crapemyrtle
- Vanilla Strawberry™ Panicle Hydrangea



HEIGHT	WIDTH	SHAPE
2-3'	3-4'	Rounded to Spreading
ZONE	EXPOSURE	
7-9	Full Sun to Part Shade	

CENTENNIAL BLUSH[™]

STAR MAGNOLIA

Magnolia stellata 'Centennial Blush' PP22,248

WHY IT ROCKS:

- Produces star shaped flowers at almost every node
- Features an attractive upright, oval habit
- Medium green foliage turns yellow or bronze in autumn

HOW TO USE IT:

- A burst of fragrant, large, pink blooms that provide beautiful contrast to evergreens
- Specimen in front of an office or house that provides spring color and summer shade

BEST BUDS:

- Vanilla Brandy™ Abelia
- Cinnamon Girl[®] Distylium
- Psychedelic Sky™ Butterfly Bush



HEIGHT	WIDTH	SHAPE
12-18'	10-15'	Upright Oval
ZONE	EXPOSURE	
4-9	Full Sun	

STRAIGHT & NARROW®

JAPANESE HOLLY

Ilex crenata 'PIIC-I' PP29,578

WHY IT ROCKS:

- Strong branches remain upright at maturity and after inclement weather
- Foliage is dark green, flat, and looks good all winter
- Perfect substitute for 'Sky Pencil,' as Straight & Narrow® resists flopping

HOW TO USE IT:

- Upright privacy screen near patios and along borders
- An eye-catching accent along walkways and foundations

BEST BUDS:

- Little Hottie® Panicle Hydrangea
- Crimson Fire® Fringe Flower
- Love Child® Sweetspire

HEIGHT	WIDTH	SHAPE
6-8'	2-3'	Upright
ZONE	EXPOSURE	
6-8	Full Sun to Part Shade	



RESOURCES

Loving what you're seeing and want some more info? We've got you covered! Our goal is to make First Editions® easy to grow, spec, sell, and install, so we've built the tools you need to be successful.

MARKETING SOLUTIONS

Visit the Resources section on BaileyNurseries.com for a full photo library, design ideas, each varieties' cultural information, fact sheets, signage options, and more. All this information is free and accessible for all! And if you need something custom for your needs, let us know and we're happy to work with you.

BRAND CONTACTS

Want to get in touch with the First Editions® team? We'd love to hear from you!

GENERAL BRAND QUESTIONS

Layci Gragnani | layci.gragnani@baileynurseries.com

LANDSCAPE & RETAIL SOLUTIONS

Rachel Prescott | rachel.prescott@baileynurseries.com

SALES

Nick Stevens | nick.stevens@baileynurseries.com

MARKETING

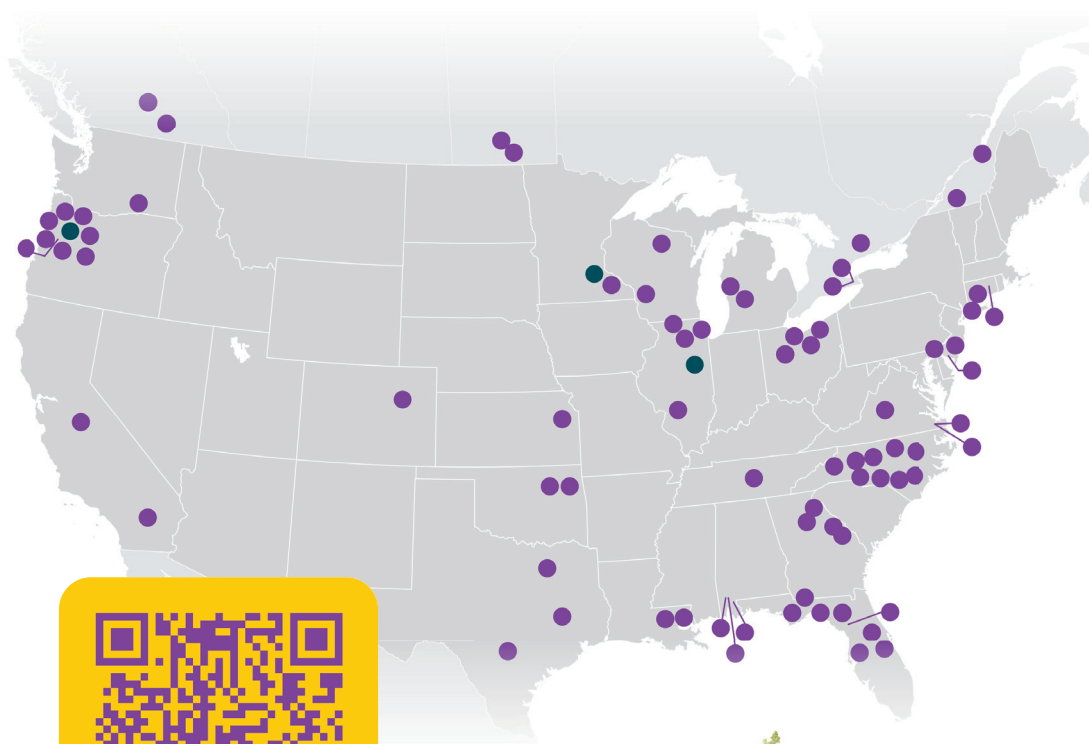
Ryan McEnaney | ryan.mcenaney@baileynurseries.com

CINNAMON GIRL®
DISTYLUM



GROWER NETWORK

Looking for First Editions® plants in your area? These trusted partners offer great regional selections. For the full list, scan the QR code. Feel free to contact any of these licensed growers for availabilities.



SCAN ME

**FLIP TO PAGE 12 TO LEARN HOW TO
PLANT THIS ROCK STAR PAIRING!**



**CRIMSON FIRE™
FRINGE FLOWER**

**LITTLE HOTTIE®
PANICLE HYDRANGEA**

**SWEET TEA™
GARDENIA**

@firsteditionsshrubtrees



firsteditionplants.com